

SÉRIE CS-301D

INTERRUPTORES DE ALAVANCA

ESPECIFICAÇÕES:

CARACTERÍSTICAS ELÉTRICAS: 6A com carga resistiva em 120VCA ou 3A com carga resistiva em 250VCA.

RESISTÊNCIA DE CONTATO: máximo de 20 miliohms com aplicação de 1A em VCC.

RESISTÊNCIA DE ISOLAMENTO: mínimo de 1.000 megohms.

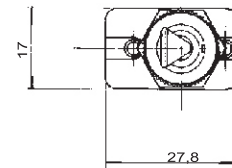
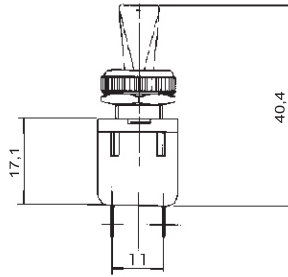
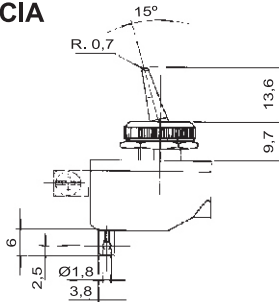
RIGIDEZ DIELÉTRICA: 1.000V(RMS) para 1 minuto (mínimo)

TEMPERATURA DE OPERAÇÃO: 0°C a 55°C



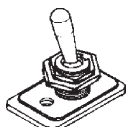
REFERÊNCIA

CS-301 D



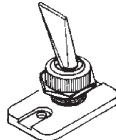
ATUADORES

M



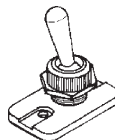
Metálico

A#



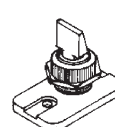
Poliamida

B#



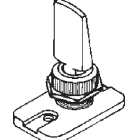
Poliamida

D#



Poliamida

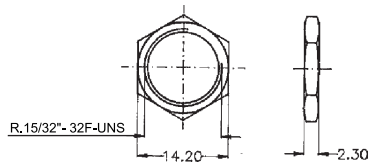
E#



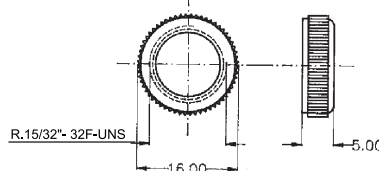
Poliamida

PORCA

B1 - Sextavada



B2# - Poliamida



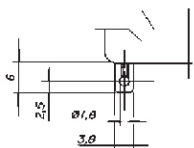
OBS.:

B3# = B1+B2#

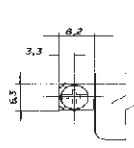
Todas as opções acompanham contra-porca.

TERMINAIS

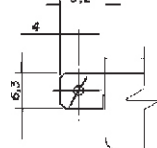
S1 - standard



P1 - parafuso



E3 - faston 6,3 x 0,8



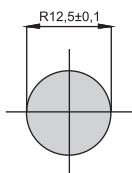
- CORES

Obs.: Substituir # pelo código da cor desejada.

A - azul
B - branco
C - amarelo
D - verde

E - vermelho
F - preto - (standard)
G - cinza
H - marrom

RASGO PARA ENCAIXE



BARRA DE CODIFICAÇÃO

CS301D

Referência



atuador

M
A#
B#
D#
E#



porca

B1
B2#
B3#



terminal

S1
P1
E3

OBS.: Atuador M - metálico com banho de níquel, o restante é injetado em poliamida.